

Datasheet

LL01ZZ-DTLxxxL06-M2

Available Distribution



Dimensions

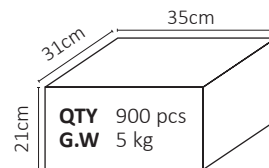
Part Number	Diameter	Height
LL01ZZ-DTLxxxL06-M2	Ø 22.1	14.76

*All dimensions are in millimeters.

LED



Packaging Details (SPQ)



Recommand Applications



General Information



- Lens Material PMMA 8N
- Operating Temperature -40°C~+70°C
- Light Transmission Rate 400nm~900nm > 90%
- ☑ If necessary, Clean lenses with mild soap, water and soft cloth.
- ⚠ Never use any commercial cleaning solvents on lenses, like alcohol.
- 🧤 Please handle or install lenses with wearing gloves, skin oils may damage lens or its optical characteristic.

Accessories

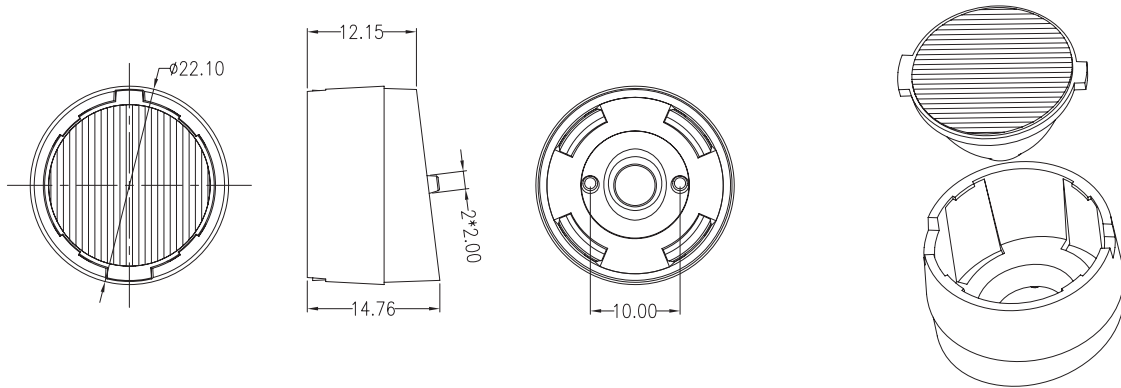


- Available with Holder

Mechanical Specification

*All dimensions are in millimeters.

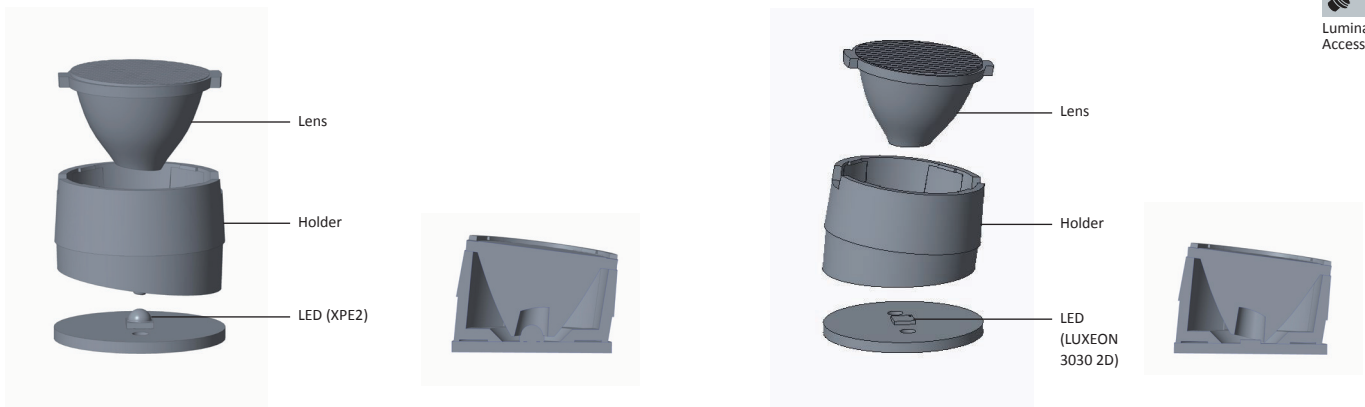
Lens Dimension



Assembly Instruction

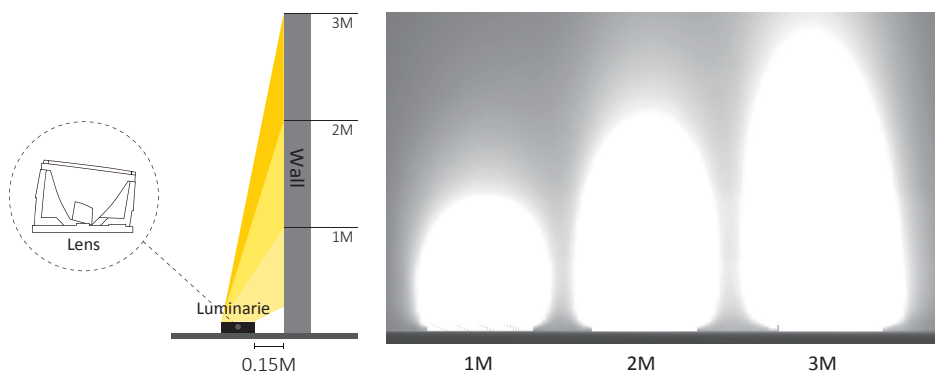
Fixing Method

Part No LL01ZZ-DTLxxL06-M2
Holder LL01ZZZT15H2

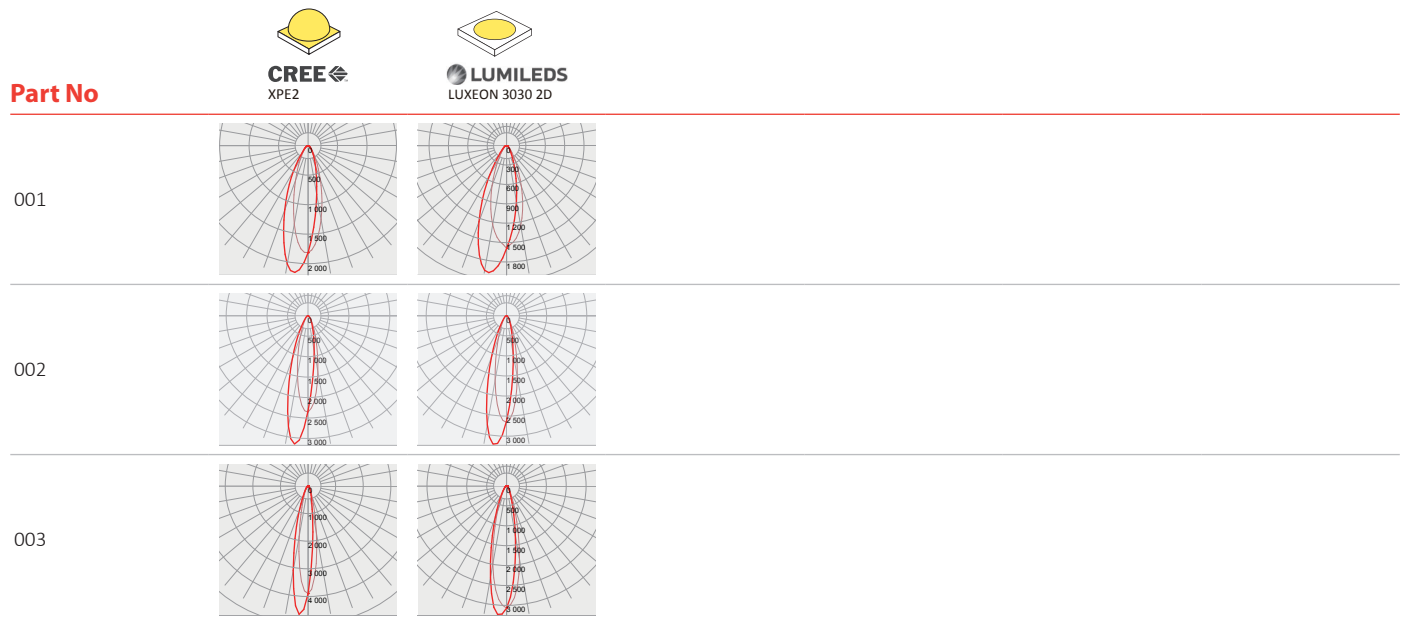


Set Up Instruction

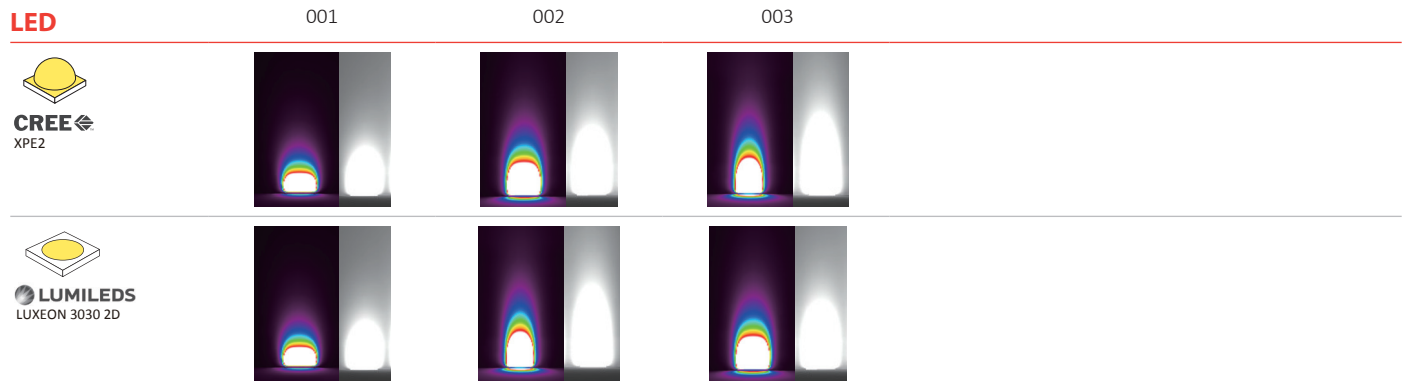
- Elevation 0°
- Distance From the Wall 0.15M






Photometric Distribution





Lighting Effects

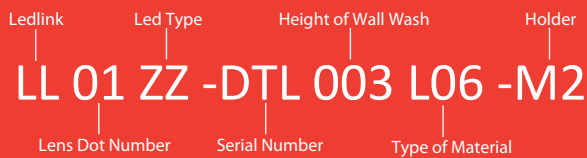


Details by LED

Part No	Holder	LED Package Size	LED
LL01ZZ-DTLxxxL06-M2	 <p>LL01ZZT15H2</p>	3030 / 3535	  <p>CREE XPE2</p> <p>LUMILEDS LUXEON 3030 2D</p>

LED	Part No	FWHM	cd / lm	IES
 <p>CREE XPE2</p>	LL01ZZ-DTL001L06-M2	28°x30°	2.1	↓
	LL01ZZ-DTL002L06-M2	20°x24°	3.1	↓
	LL01ZZ-DTL003L06-M2	16°x18°	4.6	↓
 <p>LUMILEDS LUXEON 3030 2D</p>	LL01ZZ-DTL001L06-M2	31°x35°	1.9	↓
	LL01ZZ-DTL002L06-M2	21°x23°	3.2	↓
	LL01ZZ-DTL003L06-M2	21°x24°	3.2	↓

Product Nomenclature



Ledlink Optics, Inc

Taiwan HQ

15F, No.655, Bannan Rd., Chung-Ho Dist.,
New Taipei City, Taiwan 235

Ledlink Optics (Dongguan) Co., Ltd

Dongguan Factory

No.5, TianKeng Industrial Dist., HengLiTown, DongGuan City,
GuangDong Province, China 523478

Ledlink Optics (Yangzhou) Co., Ltd

Yangzhou Factory

No.180, LinJiang Rd., YangZhou City, Jiangsu Province, China 225009

www.ledlink-optics.com

service@ledlink-optics.com

