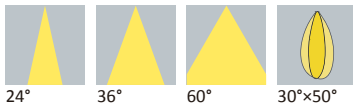




Datasheet

# LL01ZZ-DBT××L06

## Available Distribution



## LED



**LUMILEDS**  
LUXEON 3030 2D

## Recommad Applications



Architectural Commercial

## General Information



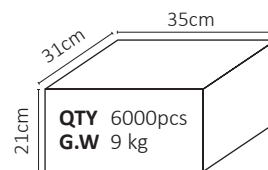
- Lens Material PMMA 8N
- Operating Temperature -40°C~+70°C
- Light Transmission Rate 400nm~900nm > 90%
- ☑ If necessary, Clean lenses with mild soap, water and soft cloth.
- ⚠ Never use any commercial cleaning solvents on lenses, like alcohol.
- 🧤 Please handle or install lenses with wearing gloves, skin oils may damage lens or its optical characteristic.

## Dimensions

Part Number	Diameter	Height
LL01ZZ-DBT××L06	∅ 16	8.5

\*All dimensions are in millimeters.

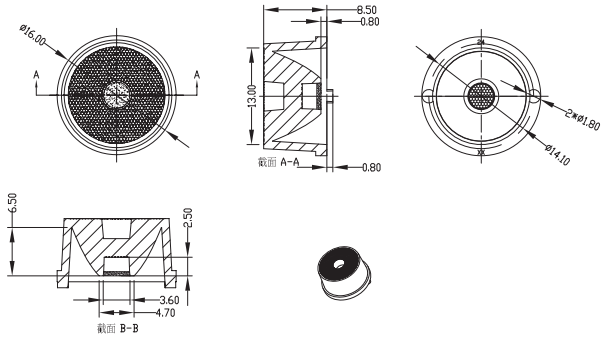
## Packaging Details (SPQ)



# Mechanical Specification

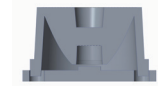
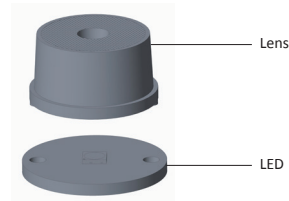
\*All dimensions are in millimeters.

## Lens Dimension



## Assembly Instruction

### Fixing Method

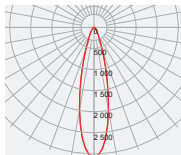


# Photometric Distribution

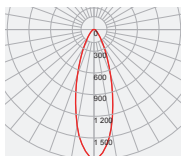


## Lens

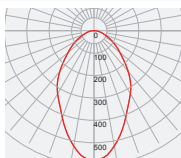
24°



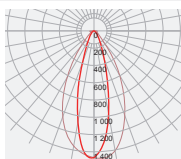
36°



60°




30°x50°

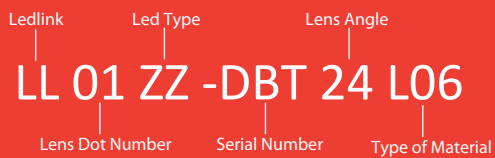


# Details by LED

Part No	Accessories	LED Package Size	LED
LL01ZZ-DBTxxL06	-	3030	 <b>LUMILEDS</b> LUXEON 3030 2D

LED	Part No	FWHM	cd / lm	IES
 <b>LUMILEDS</b> LUXEON 3030 2D	LL01ZZ-DBT24L06	25°	3.0	<a href="#">↓</a>
	LL01ZZ-DBT36L06	32°	1.7	<a href="#">↓</a>
	LL01ZZ-DBT60L06	69°	0.5	<a href="#">↓</a>
	LL01ZZ-DBT3050L06	27°x53°	1.4	<a href="#">↓</a>

## Product Nomenclature



### Ledlink Optics, Inc Taiwan HQ

15F, No.655, Bannan Rd., Chung-Ho Dist.,  
New Taipei City, Taiwan 235

### Ledlink Optics (Dongguan) Co., Ltd Dongguan Factory

No.5, TianKeng Industrial Dist., HengLiTown, DongGuan City,  
GuangDong Province, China 523478

### Ledlink Optics (Yangzhou) Co., Ltd Yangzhou Factory

No.180, LinJiang Rd., YangZhou City, Jiangsu Province, China 225009

[www.ledlink-optics.com](http://www.ledlink-optics.com)

[service@ledlink-optics.com](mailto:service@ledlink-optics.com)

