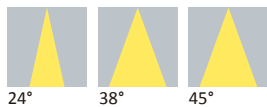


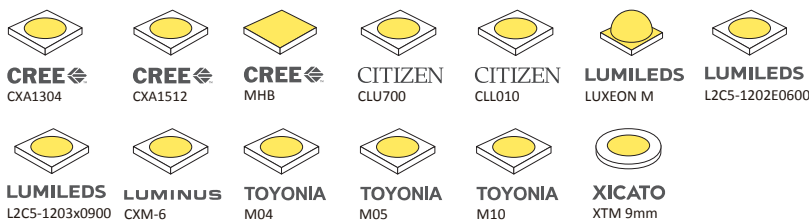
Datasheet

LL01CR-CHQxxLxx

Available Distribution



LED



Recommand Applications



General Information



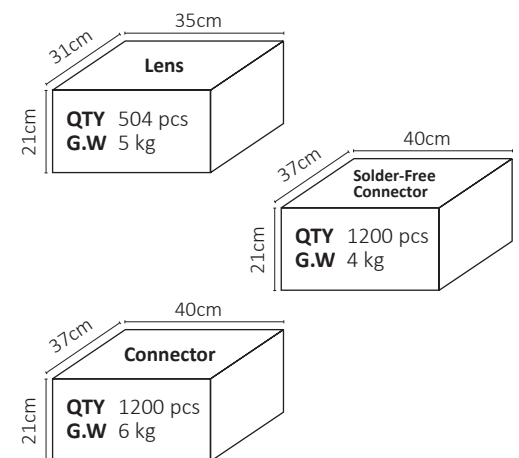
- Lens Material L02: PC LEV1700 (RTI: 90°C) / L52: PC 2180T (RTI: 125°C)
- Operating Temperature -40°C~+110°C
- Light Transmission Rate 400nm~900nm > 90%
- ☑ If necessary, Clean lenses with mild soap, water and soft cloth.
- ⚠ Never use any commercial cleaning solvents on lenses, like alcohol.
- ⚠ Please handle or install lenses with wearing gloves, skin oils may damage lens or its optical characteristic.

Dimensions

Part Number	Diameter	Height
LL01CR-CHQxxLxx	Ø35	10.5

*All dimensions are in millimeters.

Packaging Details (SPQ)



Accessories

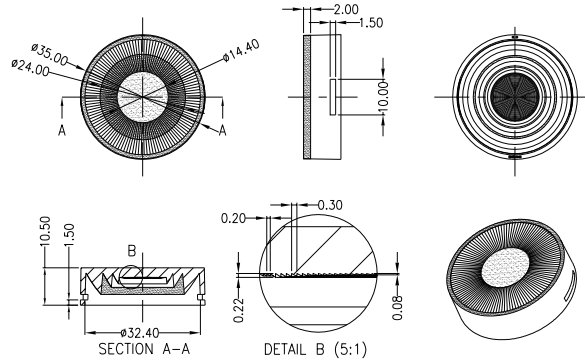


- Available with Connector
LL01A00CSLB2 (CREE CXA1512)
- Available with Solder-Free Connector
LL01A00CWFB2 (CREE CXA1304)
LL01A00CWGB2 (Citizen CLU700 / Luminus CXM-6)

Mechanical Specification

*All dimensions are in millimeters.

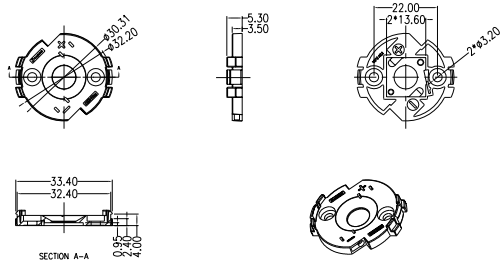
Lens Dimension



Solder-Free Connector Dimension



LL01A00CWFB2



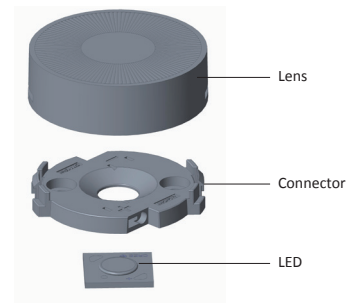
Assembly Instruction

Fixing Method

Part No LL01CR-CHQxxLxx
 Connector LL01A00CWFB2
 LED CREE CXA1304



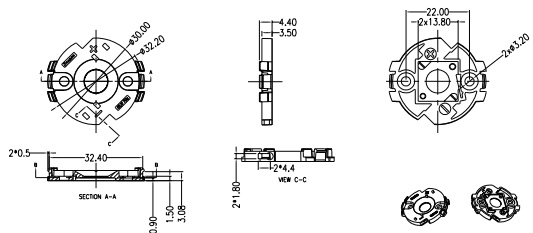
Luminaire Accessories



Solder-Free Connector Dimension



LL01A00CWGB2



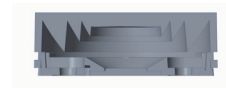
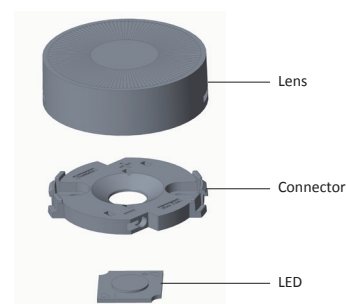
Assembly Instruction

Fixing Method

Part No LL01CR-CHQxxLxx
 Connector LL01A00CWGB2
 LED Citizen CLU700 / LUMINUS CXM-6



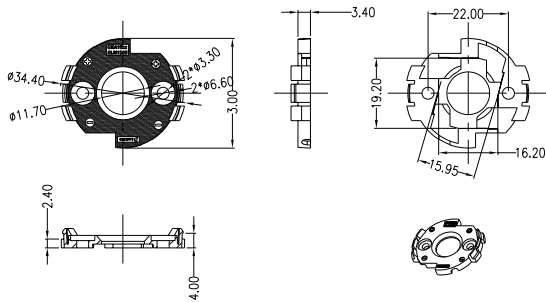
Luminaire Accessories



Connector Dimension



LL01A00CSLB2



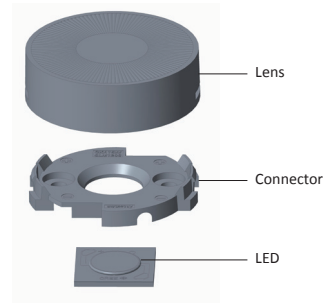
Assembly Instruction

Fixing Method

Part No LL01CR-CHQxxLxx
 Connector LL01A00CSLB2
 LED CREE CXA1512



Luminarie Accessories



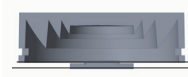
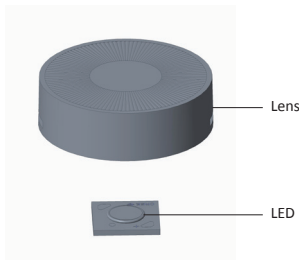
Assembly Instruction

Fixing Method

Part No LL01CR-CHQxxLxx
 LED TOYONIA M10-H-30H / M05-H-30J1
 LUMILEDS LUXEON M



Luminarie Accessories



Place the bottom of the lens above heat-sink with distance 1.5 mm.

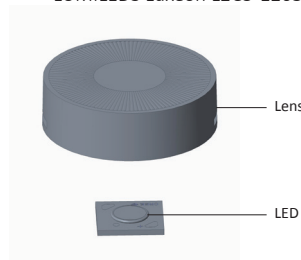
Assembly Instruction

Fixing Method

Part No LL01CR-CHQxxLxx
 LED CITIZEN CLL010
 LUMILEDS Luxeon L2C5-1202E0600
 LUMILEDS Luxeon L2C5-1203x0900



Luminarie Accessories



Place the bottom of the lens above heat-sink with distance 2.5 mm.

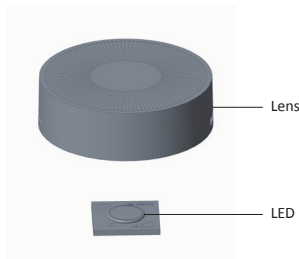
Assembly Instruction

Fixing Method

Part No LL01CR-CHQxxLxx
 LED TOYONIA M04-H-27GB



Luminarie Accessories



Place the bottom of the lens above heat-sink with distance 3.5 mm.

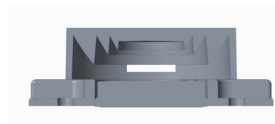
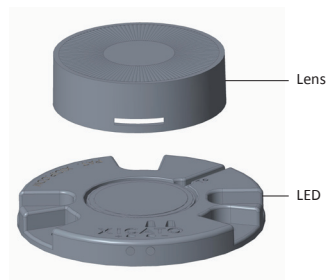
Assembly Instruction

Fixing Method

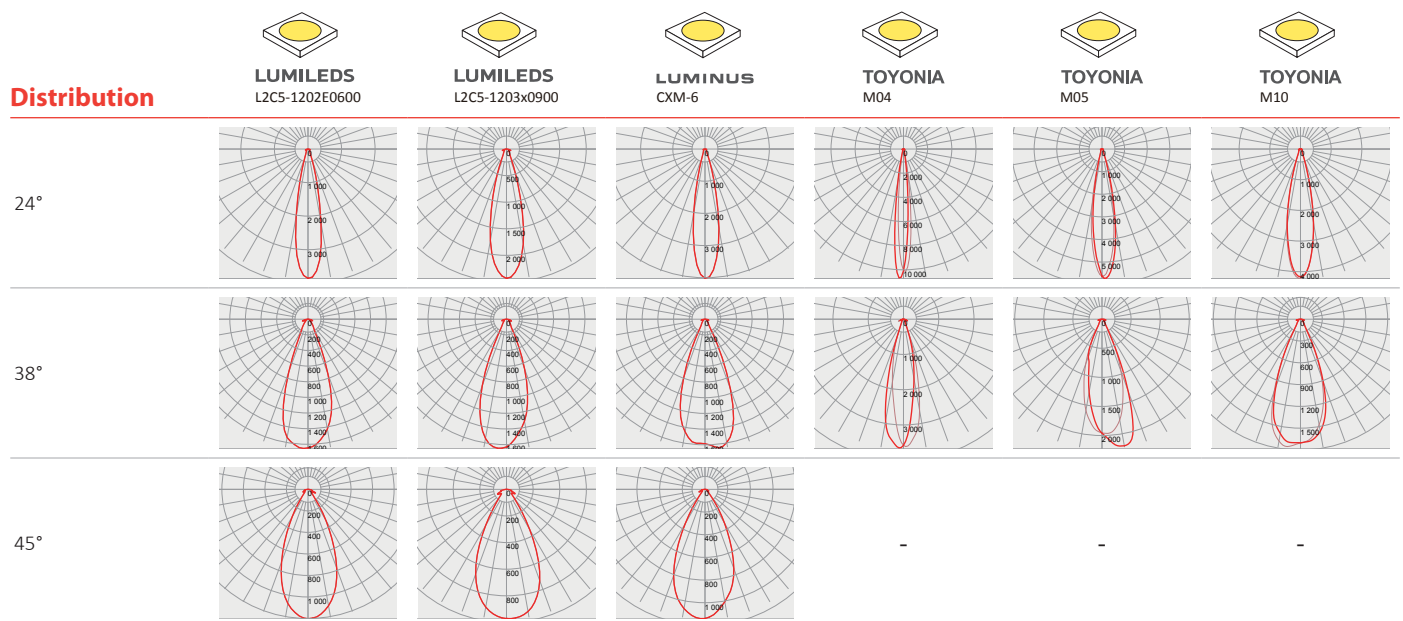
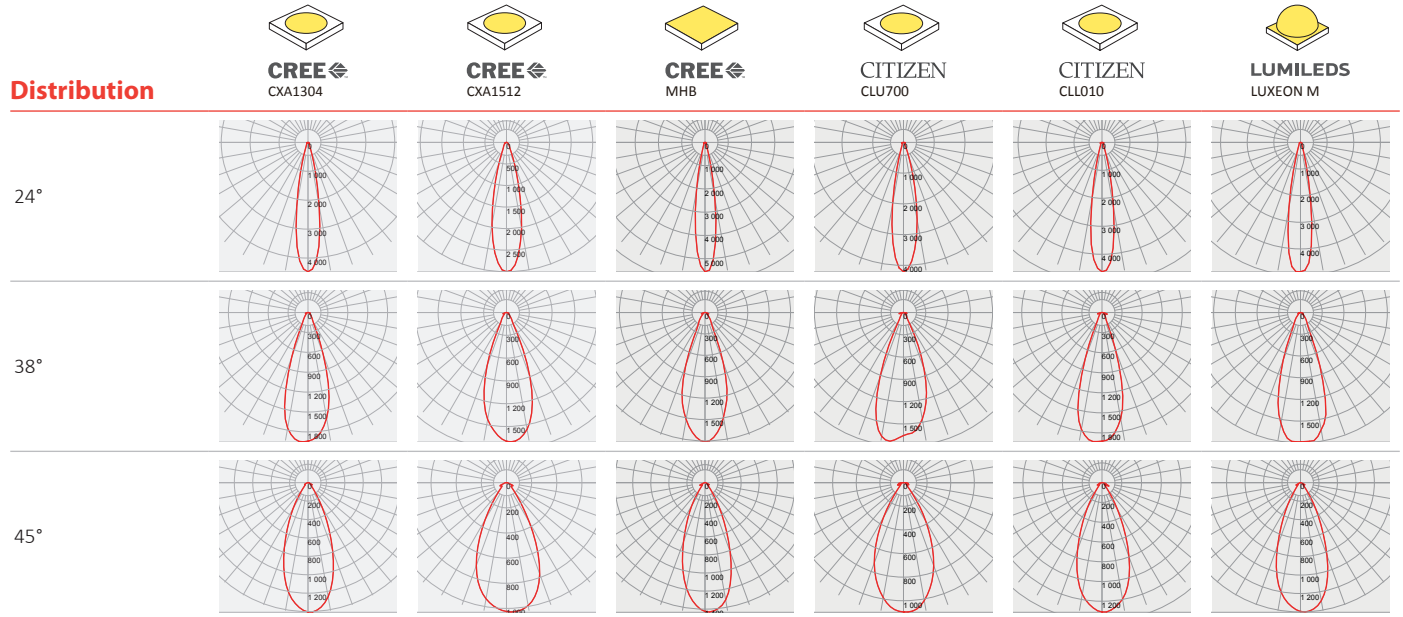
Part No LL01CR-CHQxxLxx
 LED Xicato XTM-9mm



Luminarie Accessories



Photometric Distribution



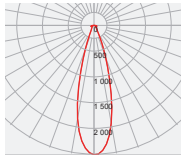
Photometric Distribution



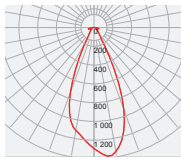
XICATO
XTM 9mm

Distribution

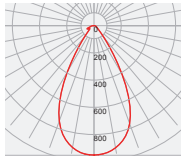
24°



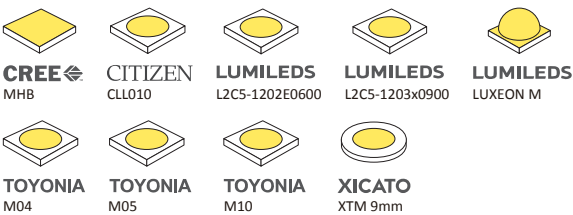








38°



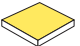












45°

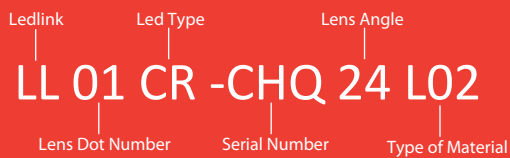


Details by LED

Part No	Connector	LED Package Size	LED
LL01CR-CHQxxLxx	-	LES \varnothing 2.8~9	 CREE MHB CITIZEN CLL010 LUMILEDS L2C5-1202E0600 LUMILEDS L2C5-1203x0900 LUMILEDS LUXEON M TOYONIA M04 TOYONIA M05 TOYONIA M10 XICATO XTM 9mm
		 LL01A00CWFB2	LES \varnothing 6  CREE CXA1304
		 LL01A00CWGB2	LES \varnothing 6~7.8  CITIZEN CLU700 LUMINUS CXM-6
		 LL01A00CWGB2	LES \varnothing 9  CREE CXA1512

LED	Part No	FWHM	cd / lm	IES
 CREE CXA1304	LL01CR-CHQ24L02	19°	4.4	↓
	LL01CR-CHQ38L02	35°	1.9	↓
	LL01CR-CHQ45L52	42°	1.4	↓
 CREE CXA1512	LL01CR-CHQ24L02	25°	3.0	↓
	LL01CR-CHQ38L02	39°	1.7	↓
	LL01CR-CHQ45L52	51°	1.0	↓
 CREE MHB	LL01CR-CHQ24L02	17°	5.5	↓
	LL01CR-CHQ38L02	37°	1.8	↓
	LL01CR-CHQ45L52	41°	1.4	↓
 CITIZEN CLU700	LL01CR-CHQ24L02	21°	4.2	↓
	LL01CR-CHQ38L02	39°	1.7	↓
	LL01CR-CHQ45L52	50°	1.0	↓
 CITIZEN CLL010	LL01CR-CHQ24L02	19°	4.6	↓
	LL01CR-CHQ38L02	34°	1.9	↓
	LL01CR-CHQ45L52	44°	1.3	↓
 LUMILEDS LUXEON M	LL01CR-CHQ24L02	19°	4.8	↓
	LL01CR-CHQ38L02	36°	1.7	↓
	LL01CR-CHQ45L52	42°	1.4	↓
 LUMILEDS L2CS-1202E0600	LL01CR-CHQ24L02	21°	3.8	↓
	LL01CR-CHQ38L02	38°	1.6	↓
	LL01CR-CHQ45L52	46°	1.2	↓
 LUMILEDS L2CS-1203x0900	LL01CR-CHQ24L02	27°	2.4	↓
	LL01CR-CHQ38L02	38°	1.6	↓
	LL01CR-CHQ45L52	52°	0.9	↓
 LUMINUS CXM-6	LL01CR-CHQ24L02	21°	4.0	↓
	LL01CR-CHQ38L02	40°	1.6	↓
	LL01CR-CHQ45L52	49°	1.1	↓
 TOYONIA M04	LL01CR-CHQ24L02	11°	10.7	↓
	LL01CR-CHQ38L02	23°	3.6	↓
	LL01CR-CHQ45L52	-	-	-
 TOYONIA M05	LL01CR-CHQ24L02	19°	5.7	↓
	LL01CR-CHQ38L02	33°	2.2	↓
	LL01CR-CHQ45L52	-	-	-
 TOYONIA M10	LL01CR-CHQ24L02	22°	4.2	↓
	LL01CR-CHQ38L02	42°	1.7	↓
	LL01CR-CHQ45L52	-	-	-
 XICATO XTM 9mm	LL01CR-CHQ24L02	28°	2.5	↓
	LL01CR-CHQ38L02	44°	1.3	↓
	LL01CR-CHQ45L52	56°	0.9	↓

Product Nomenclature



Ledlink Optics, Inc Taiwan HQ

15F, No.655, Bannan Rd., Chung-Ho Dist.,
New Taipei City, Taiwan 235

Ledlink Optics (Dongguan) Co., Ltd Dongguan Factory

No.5, TianKeng Industrial Dist., HengLiTown, DongGuan City,
GuangDong Province, China 523478

Ledlink Optics (Yangzhou) Co., Ltd Yangzhou Factory

No.180, LinJiang Rd., YangZhou City, Jiangsu Province, China 225009

www.ledlink-optics.com

service@ledlink-optics.com

